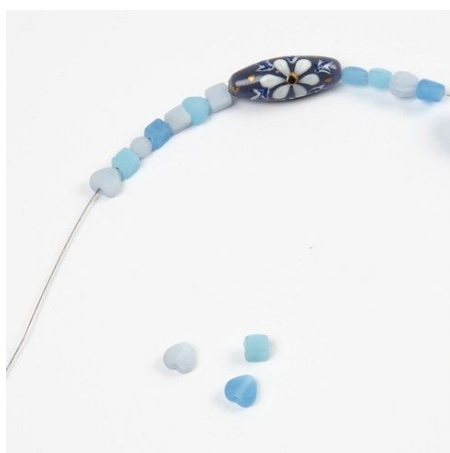


## Ketting met blauwe glas kralen

v12357

Rijg verschillende glas kralen op een stuk sieraden draad en werk af met zilveren sieraden onderdelen.

### *Hoe werkt het*



**1.** Thread the beads onto a piece of beading wire approx. 15cm longer than the desired length of the necklace.



**2.** Close both ends of the necklace with a bead tip and a crimp bead. You may refer to the techniques described in the Jewellery School.



**3.** Attach an oval ring to one end of the necklace and an oval ring with a lobster claw clasp to the other end.