



Het huis van de Kerstman

v15023

Dit huis van de Kerstman is gemaakt in een 3D-huis dat zonder lijm in elkaar gezet kan worden. Het bed en de werktafel zijn gemaakt van ijsstokjes. Het speelgoed is gemaakt van Silk Clay.

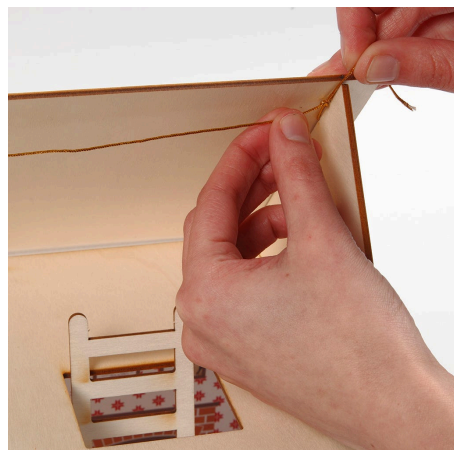
Hoe werkt het



1 Glue the wall paper onto the inside walls of the house.



2 Assemble the house when the glue is dry.



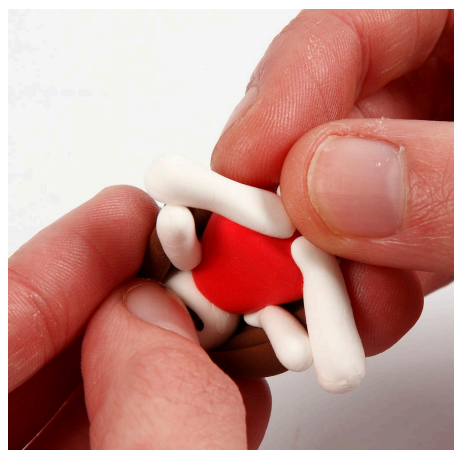
3 Attach a piece of string at the joint as shown in the picture.



4 Make miniature Silk Clay toys for Santa's workshop. Use your imagination for making your own or use steps 4-14 for inspiration and instructions.



5 -



6 -





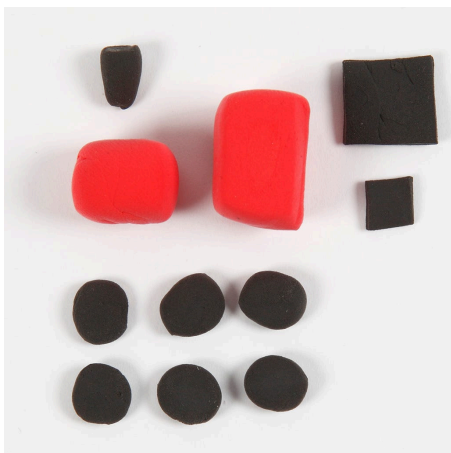
7 -



8 -



9 -



10 -



11 -



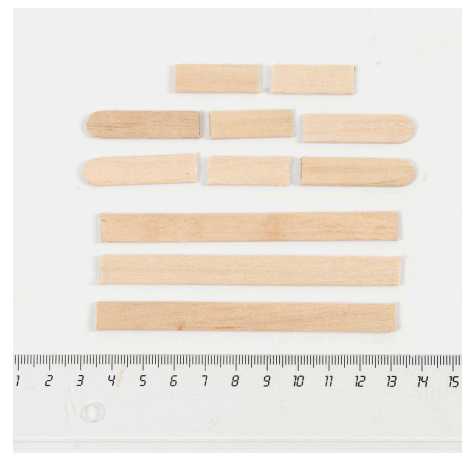
12 -



13 -



14 -

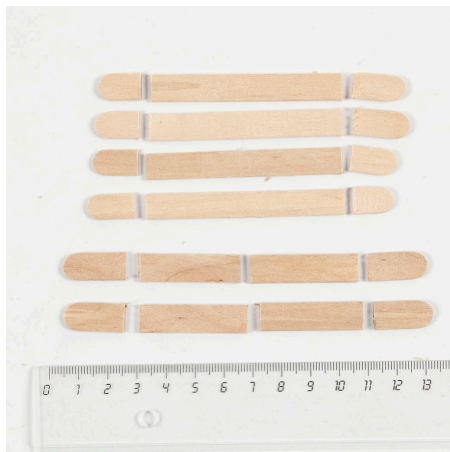


15 Make miniature furniture from ice lolly sticks. This table is made from ice lolly sticks cut into small pieces using a craft knife or a mitre cutter which is easy and quick to use for ice lolly sticks.





16 Assemble the table by placing three ice lolly sticks side by side. Glue four small pieces across and wedge the table legs between the small pieces of ice lolly sticks as illustrated in the picture.



17 Make the bed from ice lolly sticks following the same procedure as the table, but with different measurements. See the picture.



18 Make the bed ends from ends of ice lolly sticks, glued on vertically from the base of the bed. The base is made following the same procedure as the table.



19 Cut out the remaining parts from the printed sheet.

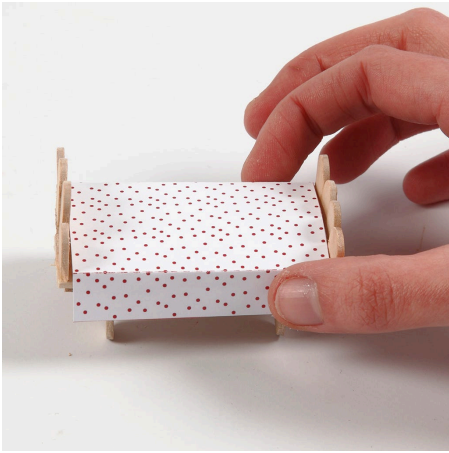


20 Assemble the small boxes. Apply a blob of glue to keep them together and tie a piece of gold thread around with a bow.



21 Make wrapping paper by rolling the paper around a flower stick, so that the paper rolls up like a roll of wrapping paper.





22 Make the bedspread by folding both sides of the paper by the dotted lines.

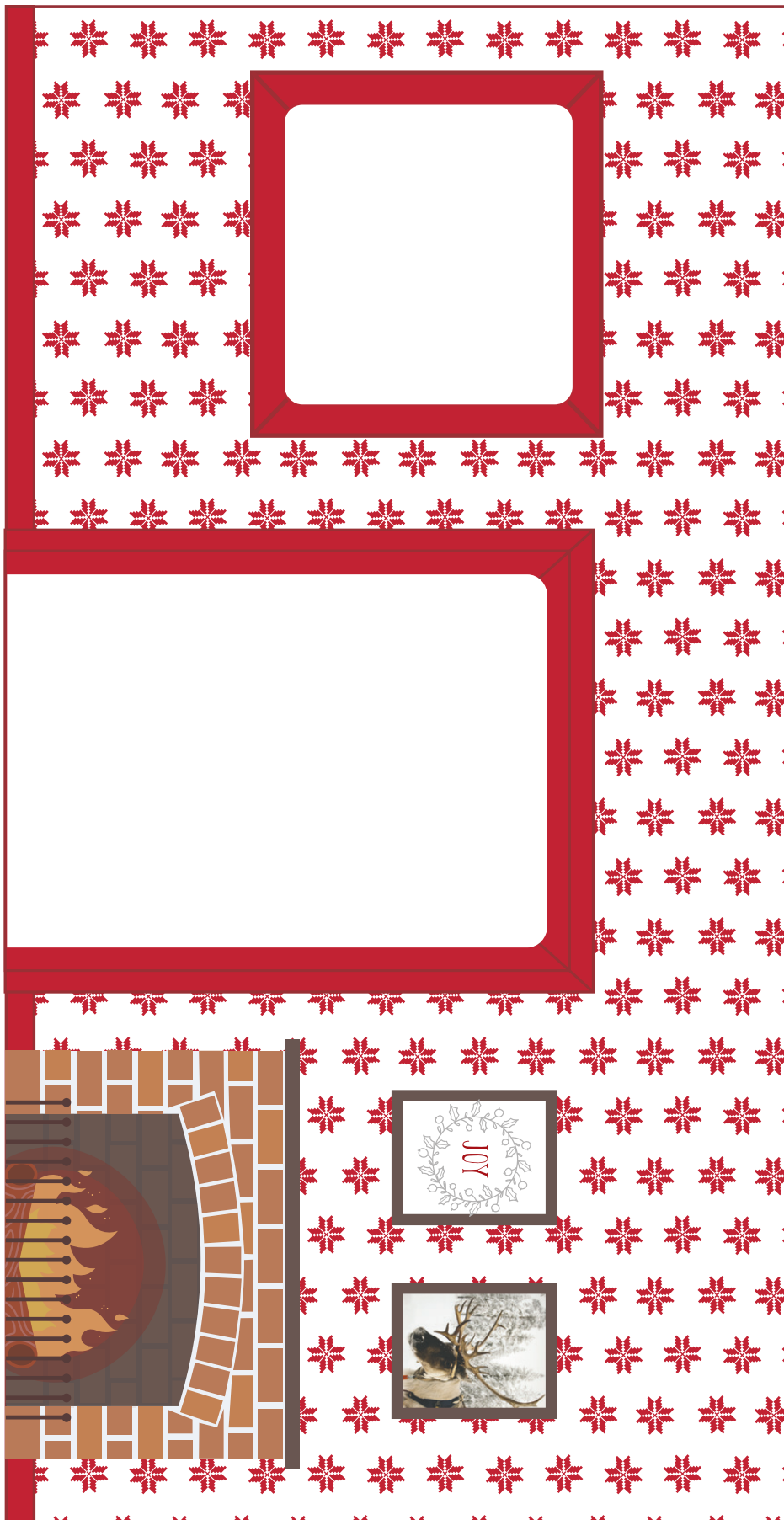


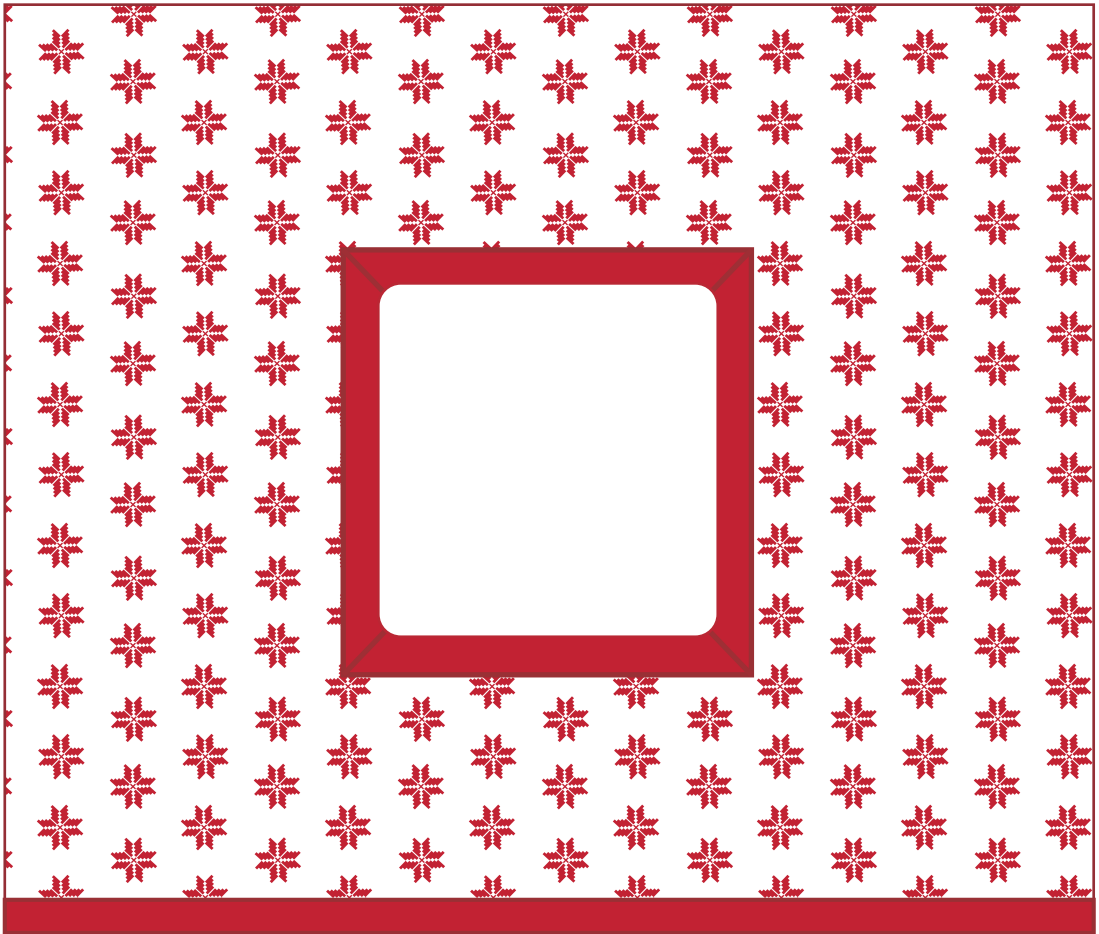
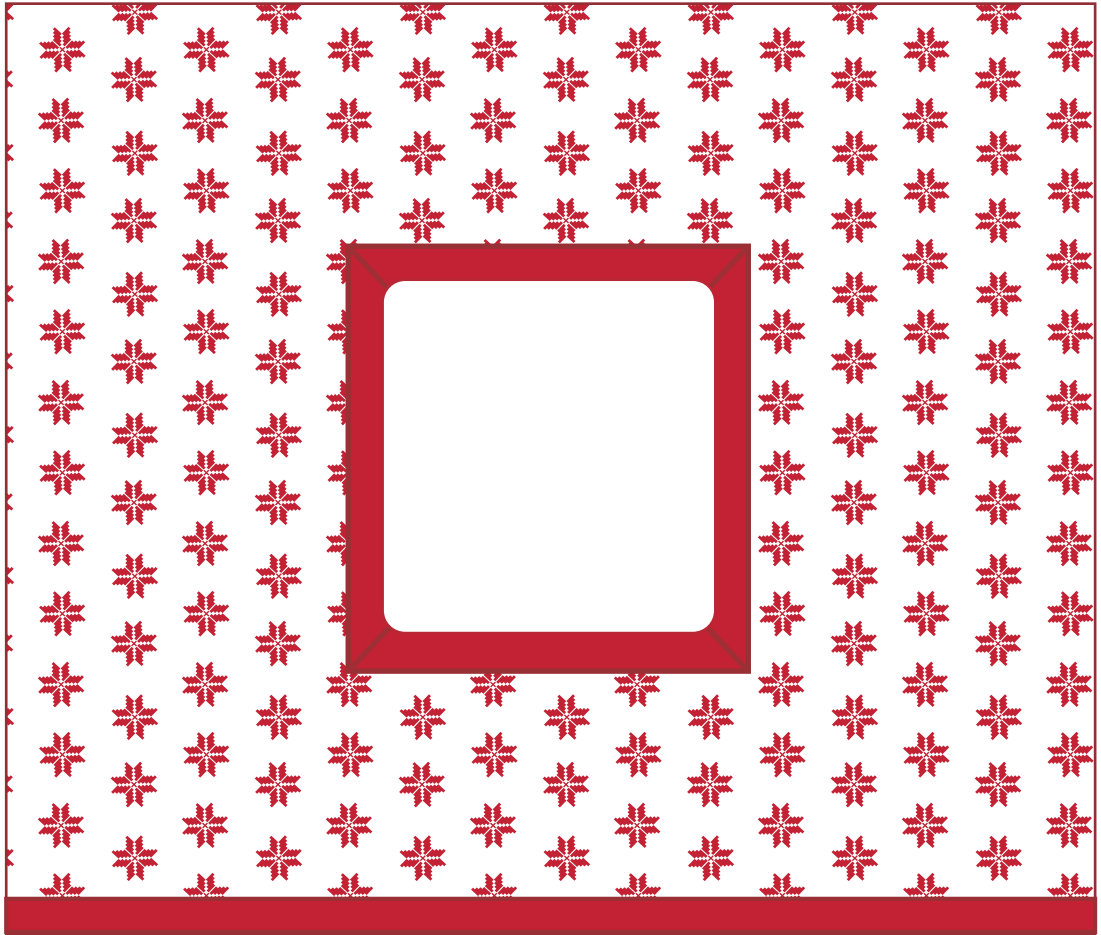
23 Decorate the Christmas tree with artificial snow by applying glue to the edges of the tree and sprinkle artificial snow onto the wet glue. Leave to dry and make small Silk Clay berries for attaching onto the tree.

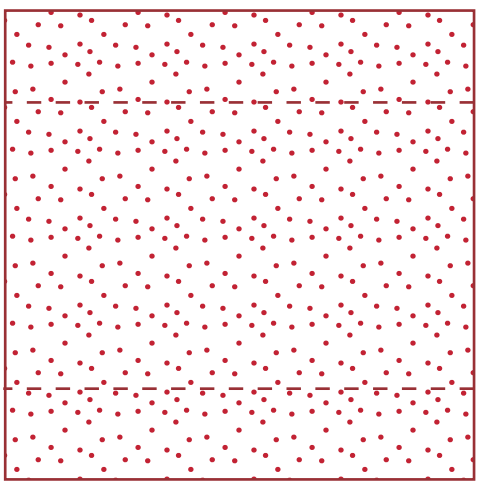
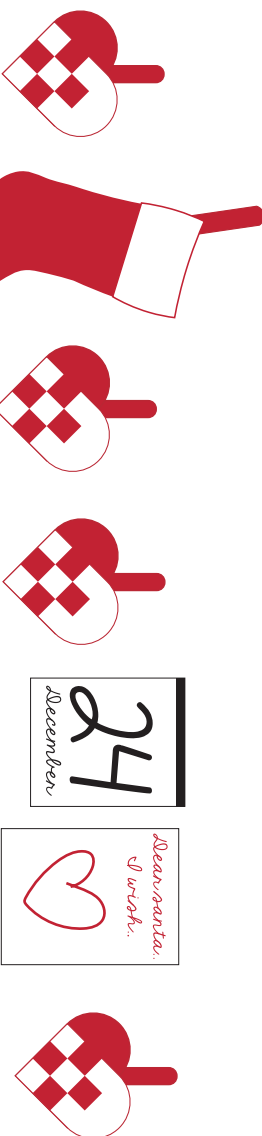


24 Put all the small decorative items in place. Hang the Christmas stocking, letters and the Advent calendar above the bed with a small amount of glue. Use a small amount of artificial snow for rice pudding and let Santa move in.









Santa's to Do
 Noa... Shain
 Mia... Teddy
 Emma... Doll

